

Vascular	Non-vascular
Plants that have vascular tubes to transport water and food.	Plants that don't have vascular tubes.
<p>Phloem Xylem</p>	<p>Phloem Xylem</p>

Coniferous trees	Deciduous trees
- small, needle-like leaves	- broad, flat leaves

# Algae

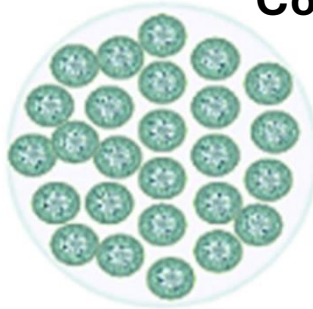
Unicellular



Multicellular/Filamentous



Colonial



\*\*usually uniform, not clumpy

## Photosynthetic pigments

Principal pigment molecule:

**Chlorophyll a**

Accessory molecules:

**Chlorophyll b**

**Chlorophyll c**

**Chlorophyll d**

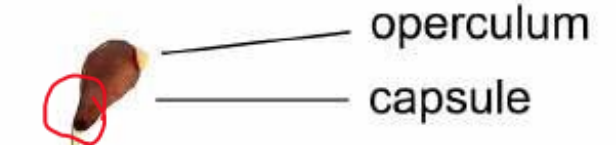
**Carotenoids**

**Phycobilins**

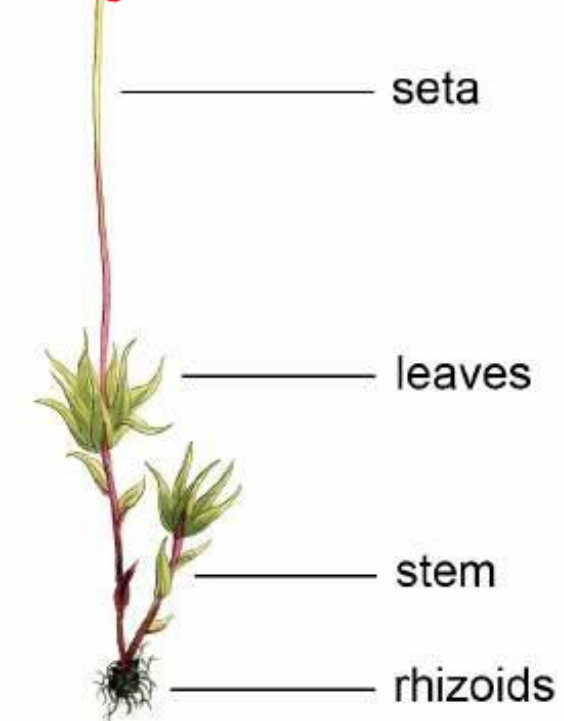
**Fucoxanthin**

# Mosses

sporophyte



gametophyte



# Pine

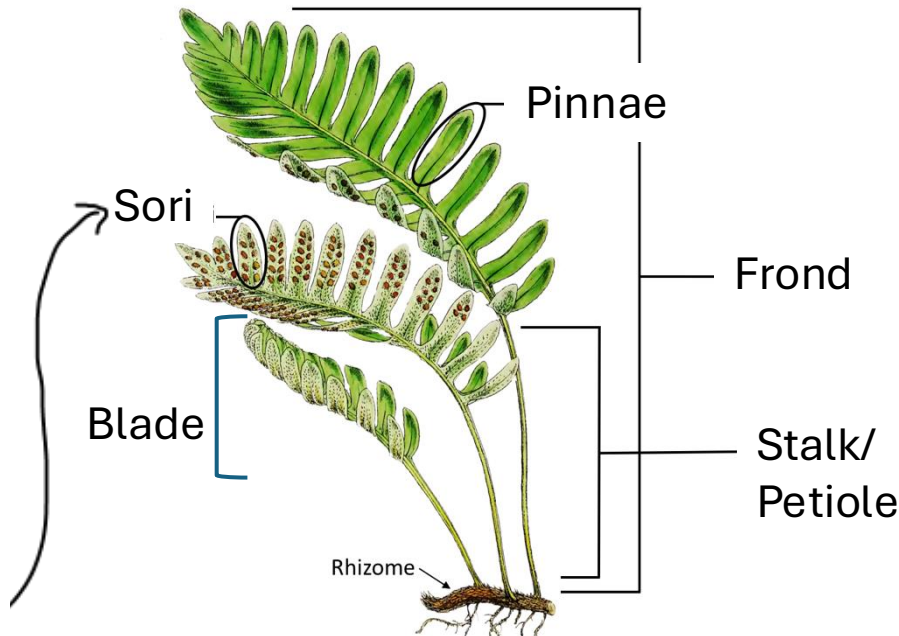


Seed wings rest on top of the scales.  
The seed end of the wing is protected in the center.

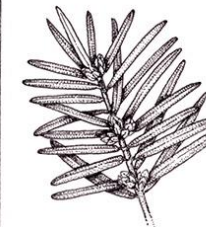
© Moving Mountains Daily

Look @ underside of pinnae

# Fern



# Yew (in conifer section)



Female flowers on branch



Male flowers on branch



Larger\*

Female flower



Small\*

Male flower



Stamen head with bracts removed

\*IF cedar does not have these = no reproductive structures